

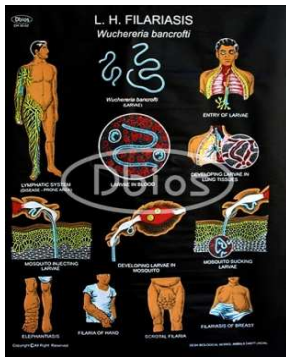
Human Rexine Chart

Sr. No.	Item Name	Page No.
1	Parasitology & Disease	1 - 2
2	Structures & Organs	2 - 4
3	System of Human Body	4 - 5

Parasitology & Disease	<p>Acquired Immuno Deficiency Syndrome (AIDS) OCH-34</p>	<p>Ancylostoma Duodenale (Hookworm) L.C. OCH-39</p>	<p>Ascaris Lumbricoides Life History OCH-37</p>	<p>Cardiovascular Disease OCH-23</p>
	<p>Cholera OCH-26</p>	<p>Colour Blindness & Hemophilia OCH-42</p>	<p>Deficiency Diseases OCH-40</p>	<p>Diarrhoea OCH-29</p>
	<p>Dysentery OCH -28</p>	<p>Entamoeba (Life Cycle) OCH-33</p>	<p>Enterobius Vermicularis (Pinworm) OCH-35</p>	<p>Fasciola Hepatica (Liver Fluke) Life History OCH-38</p>

Human Rexine Chart

Parasitology & Disease



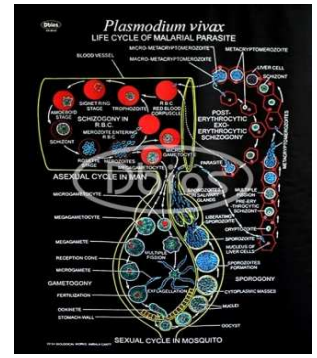
Filariasis
OCH-30



Leprosy
OCH-31

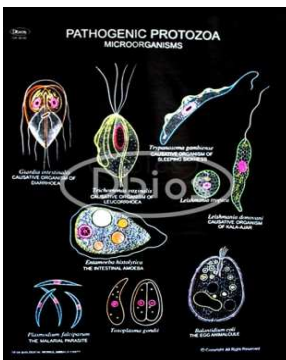


Malaria
OCH-24



Malarial Parasite Life History
OCH-36

Parasitology & Disease



Pathogenic Protozoa
OCH-32



Prevention Of Diseases
OCH-43

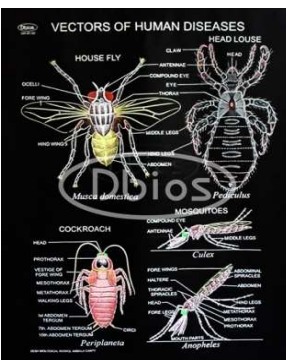


Tuberculosis
OCH-25



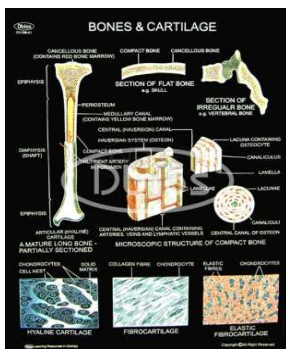
Typhoid
OCH-27

Parasitology & Disease



Vectors Of Human Diseases
OCH-41

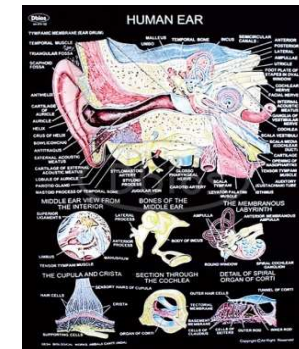
Structures & Organs



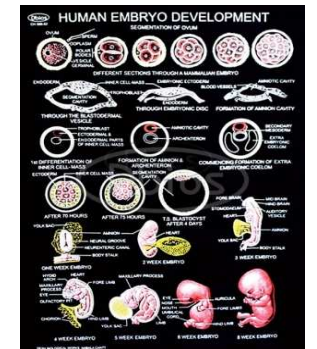
Bones & Cartilage



Brain

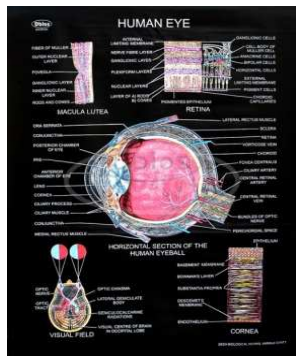
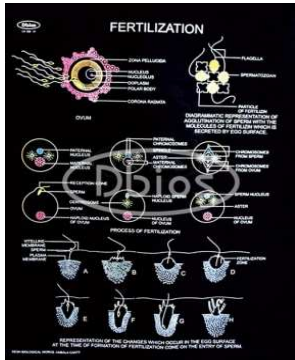
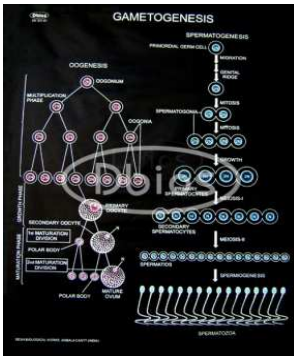
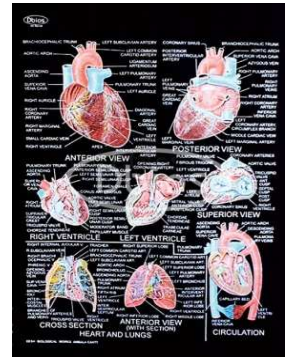
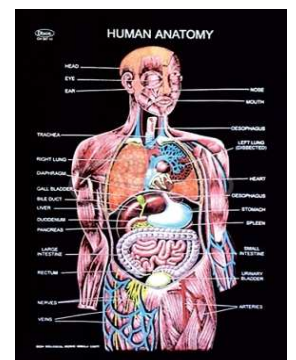
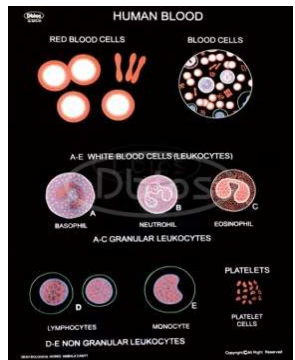

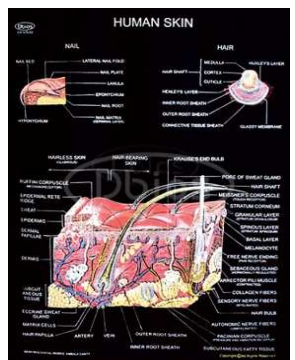
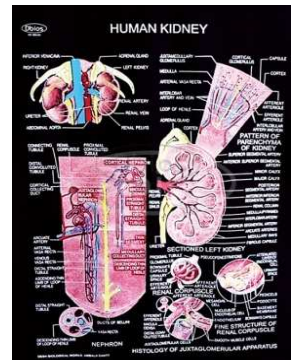
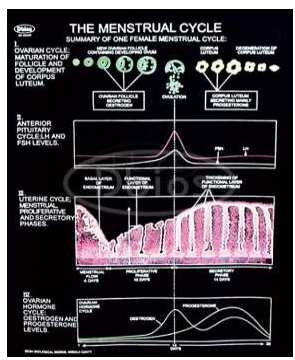

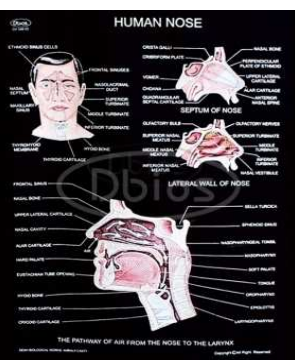


Ear



Embryo Development

Human Rexine Chart

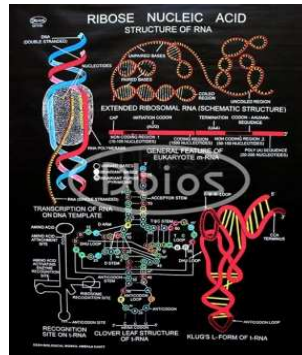
	OCH-596	OCH-565	OCH-573	OCH-586
Structures & Organs	 <p>Eye OCH-572</p>	 <p>Fertilization OCH-308</p>	 <p>Gametogenesis OCH-307</p>	 <p>Heart OCH-564</p>
Structures & Organs	 <p>Human Anatomy OCH-587</p>	 <p>Human Blood Cells OCH-587A</p>	 <p>Human Joints OCH-590</p>	 <p>Human Skin OCH-575</p>
Structures & Organs	 <p>Kidney OCH-583</p>	 <p>Menstrual Cycle OCH-592</p>	 <p>Muscles OCH-595</p>	 <p>Nose OCH-588</p>

Human Rexine Chart

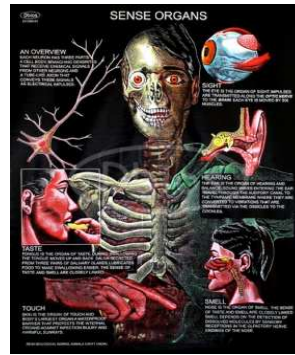
Structures & Organs



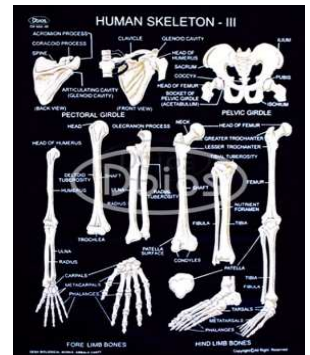
Oogenesis
OCH-309



RNA
OCH-11

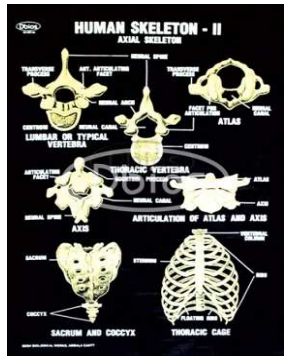


Sense Organs
OCH-594

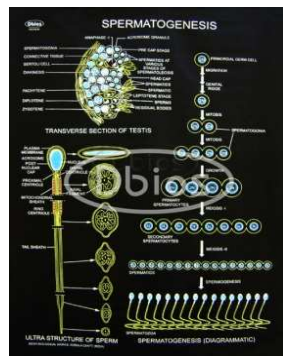


Skeleton III (Girdles & Limbs)
OCH-568

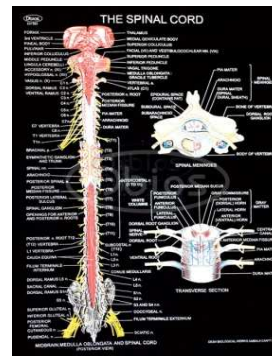
Structures & Organs



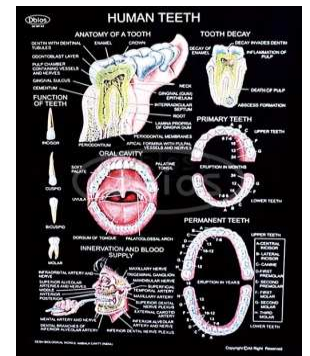
Skeleton-II (Vertebrae)
OCH-567



Spermatogenesis
OCH-310

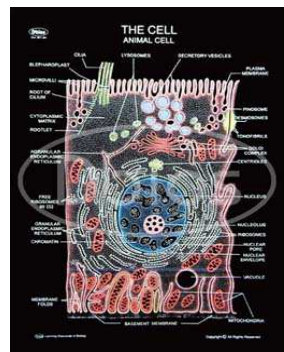


Spinal Cord
OCH-593

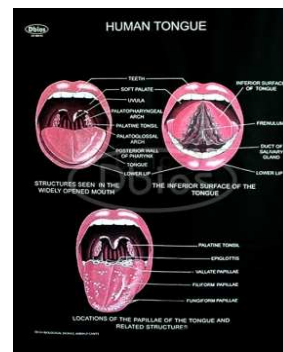


Teeth
OCH-581

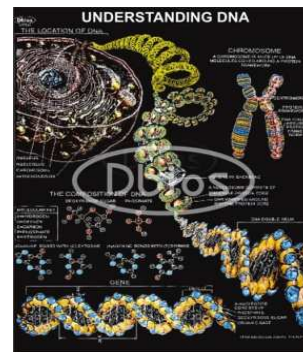
Structures & Organs



The Cell
OCH-301

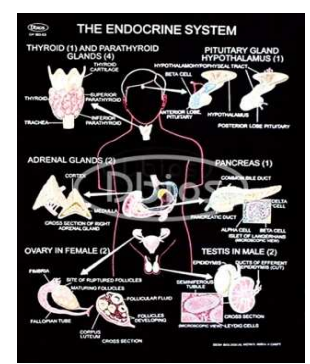
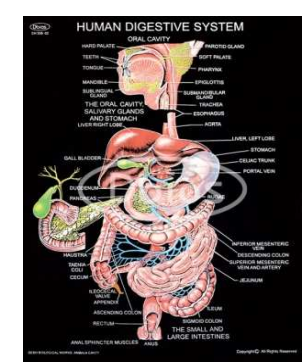
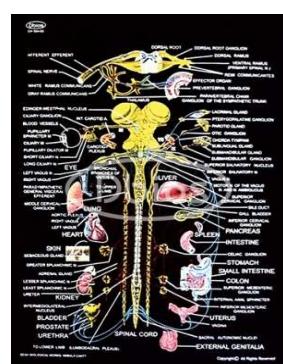
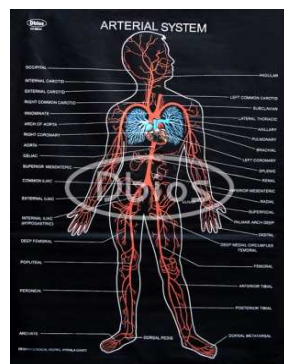


Tongue
OCH-589



Understanding DNA
OCH-10

System of Human Body



Human Rexine Chart

	Arterial System OCH-555	Autonomic Nervous System OCH-554	Digestive System OCH-558	Endocrine System OCH-563
System of Human Body	<p>Excretory System OCH-560</p>	<p>Female Reproductive System OCH-561</p>	<p>Human Immune System OCH-597</p>	<p>Lymphatic System OCH-557</p>
	<p>Male Reproductive System OCH-562</p>	<p>Muscular System OCH-551</p>	<p>Nervous System OCH-553</p>	<p>Respiratory System OCH-559</p>
System of Human Body	<p>Skeleton-I (Entire Skeleton, Vertebral Column & Skull) OCH-552</p>	<p>Venous System OCH-556</p>		